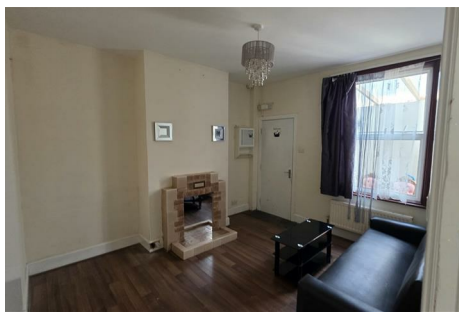




Parkfields

Estates



Leonard Road , Southall, UB2 5HZ

Parkfields Estates are delighted to offer for rent this . spacious property includes; TWO RECEPTION ROOMS, KITCHEN, Bathroom, Three Bedrooms, FRONT AND REAR GARDENS with links to HEATHROW and HOUNSLOW, Close to local Schools, Shops and Public Transport.

AVAILABLE NOW

EALING COUNCIL TAX BAND C

£2,300 Per Month

28 Leonard Road

, Southall, UB2 5HZ



- THREE BEDROOMS
- ADDITIONAL GROUND FLOOR WC
- 2 RECEPTION ROOMS
- AVIALABLE NOW
- GROUND FLOOR BATHROOM

Ground Floor

Hall Way

Reception Room One

13'9" (into bay) x 10'6" (4.19 (into bay) x 3.20)

Reception Room Two

11'8" x 10'8" (3.56 x 3.25)

Bathroom/WC

Kitchen

8'6" x 5'3" (2.59 x 1.60)

First Floor

Landing

Bedroom One

13'9" (into bay) x 13'4" (4.19 (into bay) x 4.06)

Bedroom Two

11'9" x 9'6" (3.58 x 2.90)

Bedroom Three

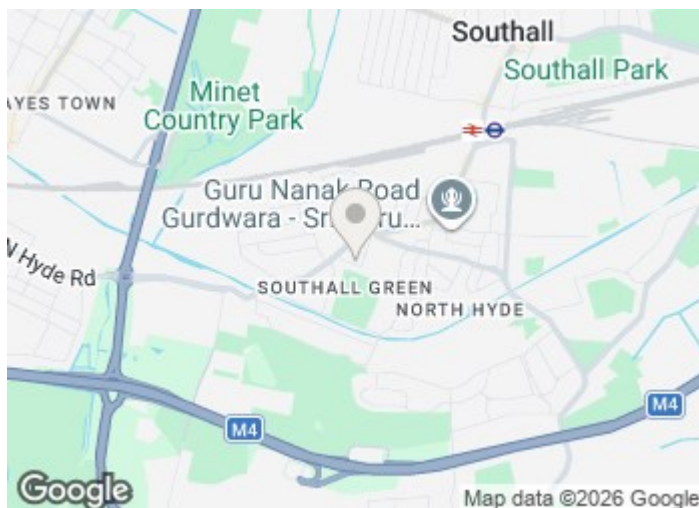
8'6" x 6'9" (2.59 x 2.06)

Outside

Front Garden

Rear Garden

Over 40'0" (Over 12.19)



Directions

Floor Plan

These particulars, whilst believed to be accurate are set out as a general outline only for guidance and do not constitute any part of an offer or contract. Intending purchasers should not rely on them as statements of representation of fact, but must satisfy themselves by inspection or otherwise as to their accuracy. No person in this firm's employment has the authority to make or give any representation or warranty in respect of the property.

1 The Crescent, Southall, Middlesex, UB1 1RE
Tel: 0208 571 0253 Email: info@parkfields-estates.com <https://www.parkfields-estates.com>

